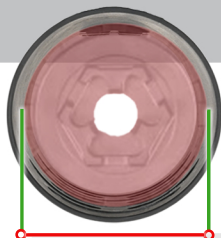




RAS-XL: SUPPRESSOR SHIELD

RAIL ATTACH SHIELD X-LARGE



1.9"



SPECS:

MATERIALS

FILAMENT WOUND CARBON FIBER
HIGH TEMPERATURE RESIN

DIAMETER

FITS SUPPRESSORS 1.6" - 1.9"

LENGTH

5" - 9.5" IN .5" INCREMENTS

WEIGHT

4-6 OZ / 114G - 170G

TEMPERATURE RATING

1,200°F / 649°C
*SUPPRESSOR TEMP

ATTACHMENT

VIA TOP PICATINNY RAIL

ACCESSORIES

UNITY FUSION™ SIGHTS
*OPTIONAL

THE RAS-XL WAS BORN OUT OF THE REQUESTS FROM OUR CUSTOMERS FOR A LARGER DIAMETER SHIELD TO ACCOMMODATE THE NUMEROUS SUPPRESSORS UP TO 1.9" IN DIAMETER.



Phone: 720-608-8609
Email: info@modtac.us